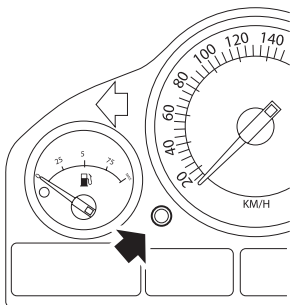


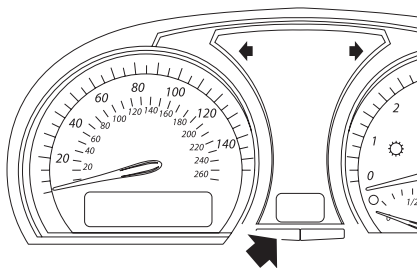
## BMW

**Manual Service Reset -  
BMW 3 Series (E46), BMW 7 Series  
(E23), BMW 5 Series (E28) and  
BMW X5 (E53)**

**BMW X3 (E83) and BMW Z4 (E85)**



OM1347



*Button A arrowed in illustrations*

The Service Interval Display (SIA) can be reset using the reset button for the trip distance recorder on the instrument cluster

*NOTE: The distance-based inspection can only be reset if approximately 10 litres of fuel have been used since the previous reset was performed. The time-based inspection can only be reset if approximately 20 days have passed since the previous reset was performed*

1. Switch ignition OFF.
2. Press and hold button **A**.
3. Keep button depressed and switch the ignition to position I.
4. Keep button depressed for 5 seconds, until the service status is displayed.

Autodiagnos Ltd  
Hopton Estate, London Road, Devizes, SN10 2EU  
Tel: 0870 949 3799 Fax: 01380 732001 Email: [info@autodiagnos.com](mailto:info@autodiagnos.com)  
[www.autodiagnos.com](http://www.autodiagnos.com)

Autodiagnos Limited is registered in England and Wales at Hopton Industrial Estate, Devizes, Wiltshire, SN10 2EU. Company No. 3062855

5. The display will now indicate the remaining distance to service and the type of service required (**OIL SERVICE** or **INSPECTION**). If the remaining distance is displayed with 'rSt' then the service interval can be reset.
6. To reset the distance to service limit press button **A** for 5 seconds. The '**rSt**' (or reset) will flash on the display. If the reset is not required then wait until the '**rSt**' (or reset) has stopped flashing before continuing. To reset press button **A** again before '**rSt**' has flashed 5 times to reset the service distance limit. The new distance to service will be displayed for 5 seconds.

*NOTE: For vehicles that do not include time-based inspection then '**End SIA**' will be displayed with the remaining distance until the next service. For vehicles that do include time-based inspection then the time-based inspection status will be shown.*

7. The display will now indicate the remaining time to service. If the remaining time is displayed with '**rSt**' then the service interval can be reset.
8. To reset the time to service limit press button **A** for 5 seconds. The '**rSt**' (or reset) will flash on the display. If the reset is not required then wait until the '**rSt**' (or reset) has stopped flashing before continuing. To reset press button **A** again before '**rSt**' has flashed 5 times to reset the service time limit. The new time to service will be displayed for 5 seconds.
9. The '**End SIA**' will now be displayed with the remaining time until the next service.