

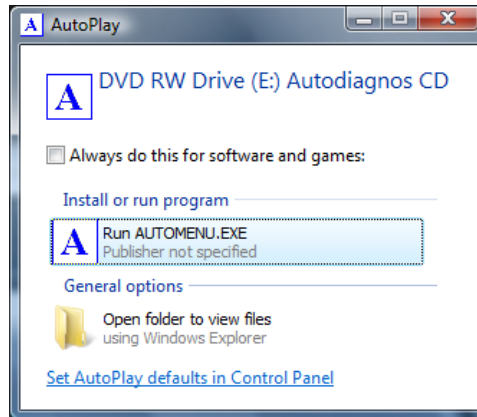
Multi-Cartridge Manager – Installation on Windows Vista

The 'Multi-Cartridge manager' software is used to manage the information held on the multi-cartridge. It allows software applications and customer licence information to be updated when required. It is recommended that this software is installed immediately following these steps:

Note:

Although Windows Vista is not officially supported by Multi-Cartridge Manager versions (up to and including V1.20) the following procedure will allow it to function correctly.

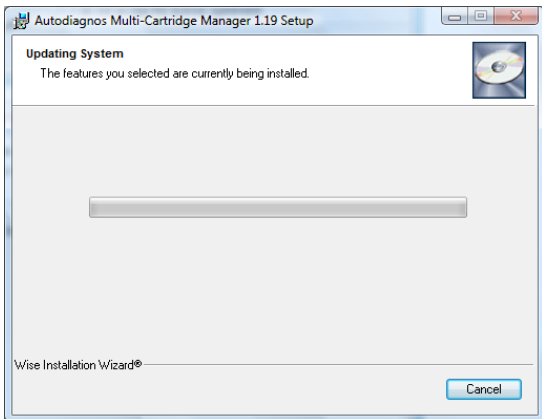
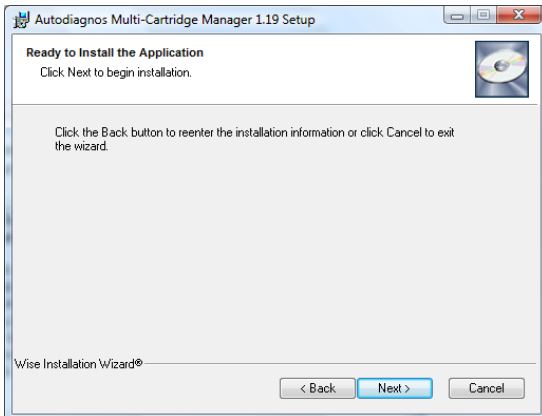
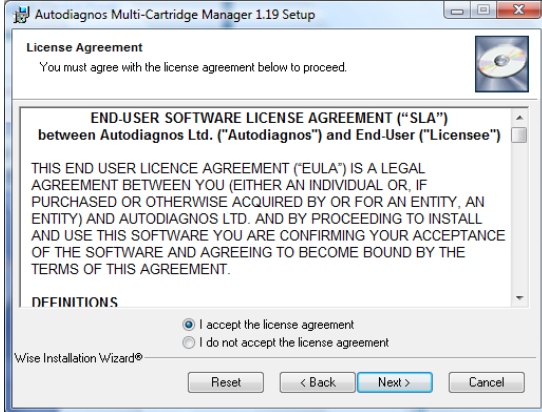
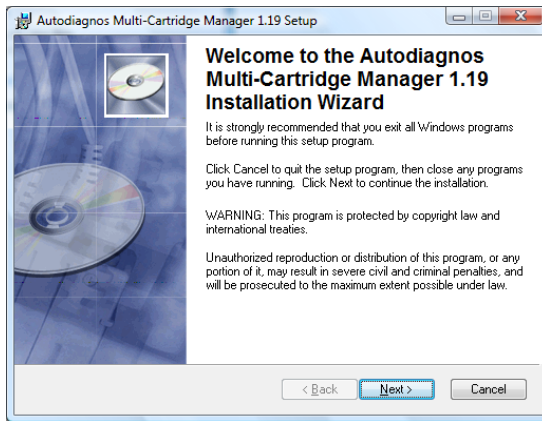
The following warning message may be show by Windows Vista before the Autodiagnos CD 'Auto runs'. Click 'Run AUTOMENU.EXE' to begin.



IMPORTANT! – DO NOT CONNECT THE MULTI-CARTRIDGE UNTIL ADVISED



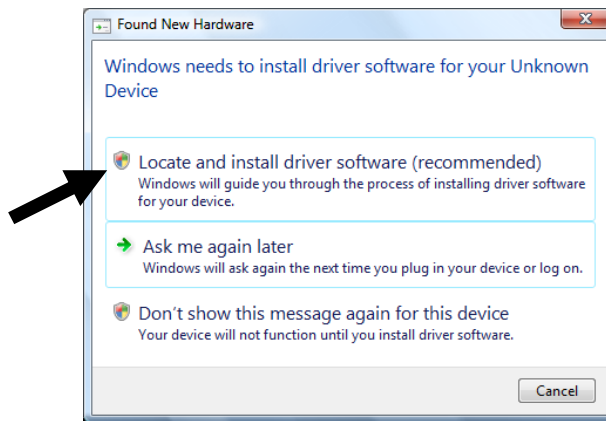
- 1) Insert the CD into the drive, it should auto run and display the "Autodiagnos" window
- 2) If required the multi-cartridge manager software installation will begin, follow the instructions
- 3) Press the 'Multi Cartridge' icon. The following screens will be displayed in succession. Press <NEXT> each time you receive confirmation that the software has been installed



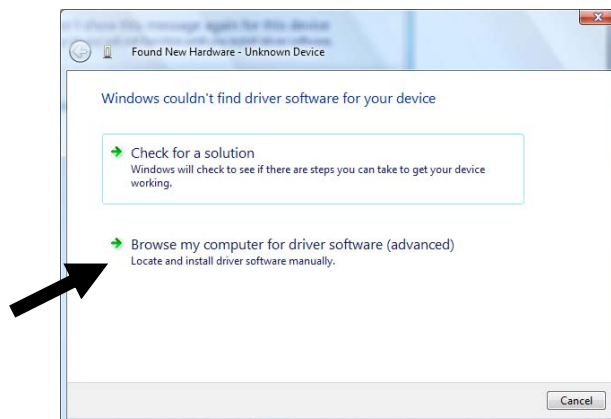


Multi-Cartridge Driver - Installation

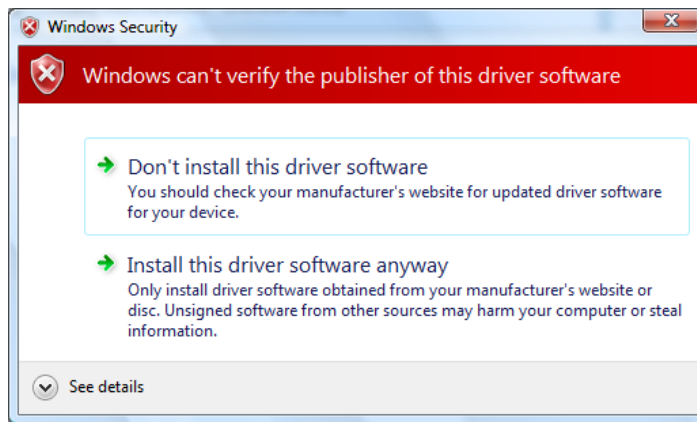
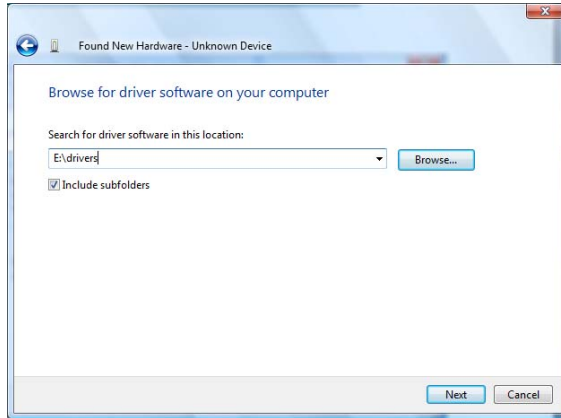
1) Once Multi-Cartridge manager installation is complete connect the Multi-Cartridge to a USB port on the PC. Windows will detect a new device and display the “Unknown Device” error message. Select “Locate and Install driver software (recommended)” to continue.



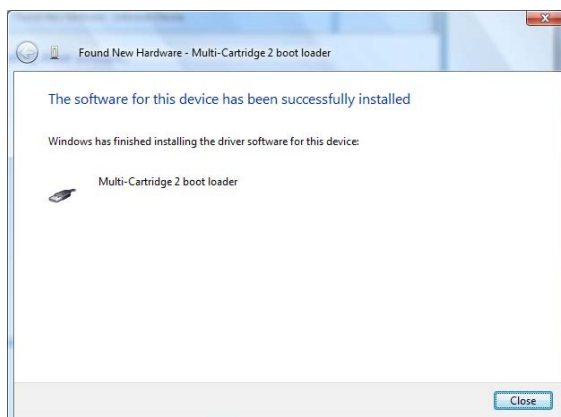
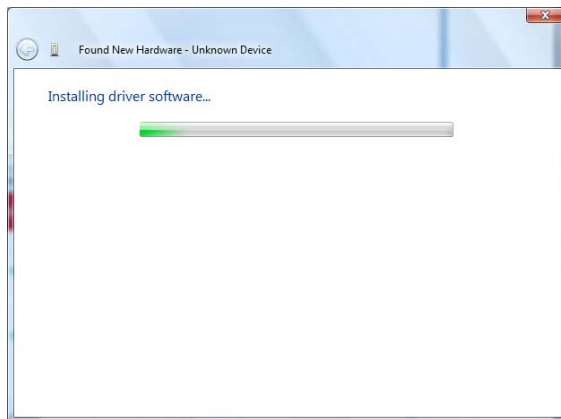
2) Select “Browse my computer for driver software (advanced).”



3) Use the 'Browse' feature to select location 'E:\drivers' then click 'Next'



Click 'Install this driver software anyway' to continue...



Once the driver has been installed the Multi-Cartridge manager software is ready to use.