

VAG Service Reset procedure - CAN (1F) equipped models

The CAN service reset function described below was implemented on VAG group software v3.42 and is available on all subsequent versions. It can be used on all Volkswagen, Audi, Seat and Skoda models which require CAN based long life service reset routines.

Coverage: VAG Group vehicles from 2003 – 2006 (dependant on model and variant).

Standard service reset

This function sets the mileage/distance back to the previously set 'Standard' value. It sets channel '02' in controller '17' (Instruments) to a zero value.

Long Life service reset

This function allows the relevant channels in controller '17' (Instruments) to be set to the correct values for a long life reset to take place. There are a maximum of 6 channels to be set to complete the procedure.

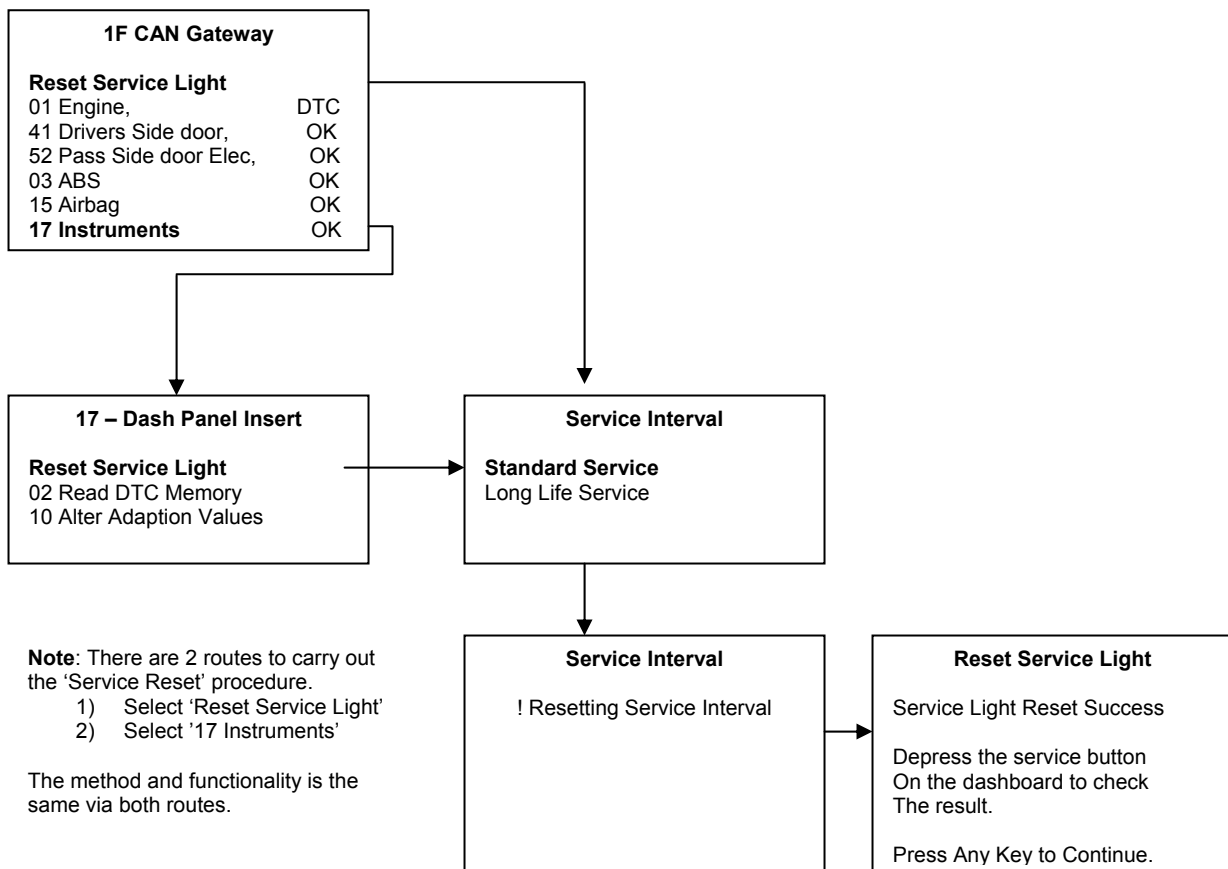
Procedure

Audi/Seat/Skoda/Volkswagen

00 Read DTC From every ECU
1F CAN Gateway
 01 Engine
 02 Transmission

Note: By selecting '1F CAN gateway' the tester checks for the presence of a CAN network on the vehicle. If found it will then display a list of controllers available on that network and the fault status of each of them.

Standard Service



Long Life Service

1F CAN Gateway

Reset Service Light	
01 Engine,	DTC
41 Drivers Side door,	OK
52 Pass Side door Elec,	OK
03 ABS	OK
15 Airbag	OK
17 Instruments	OK

Note: There are 2 routes to carry out the 'Service Reset' procedure'.

- 1) Select 'Reset Service Light'
- 2) Select '17 Instruments'

The method and functionality is the same via both routes.

17 – Dash Panel Insert

Reset Service Light
 02 Read DTC Memory
 10 Alter Adaption Values

Service Interval

Standard Service
Long Life Service

Service Interval

WARNING! Entering incorrect or invalid data may cause undesirable results.

Press ENTER to proceed or EXIT to Abort

Note: Once the procedure starts it checks the availability of 6 pre-determined channels in turn (45, 42, 43, 44, 40 and 41). If a channel is available the currently set value will be displayed. The first channel to be checked is: **45: OIL QUALITY**

In this case a value of (2) has been read back as the previously set value. Press ENTER to re-select the previously set value or change it to desired figure. Once set the procedure will move to the next channel.

Service Interval

Checking Channel Availability
 Please Wait.....

Reset Service Light

Channel 45: Oil Quality
 Enter Value (2)

! TESTING VALUE
 PLEASE WAIT.....

Value is within range.
 Do you wish to save the value?

Press YES to save or NO to re-enter value.

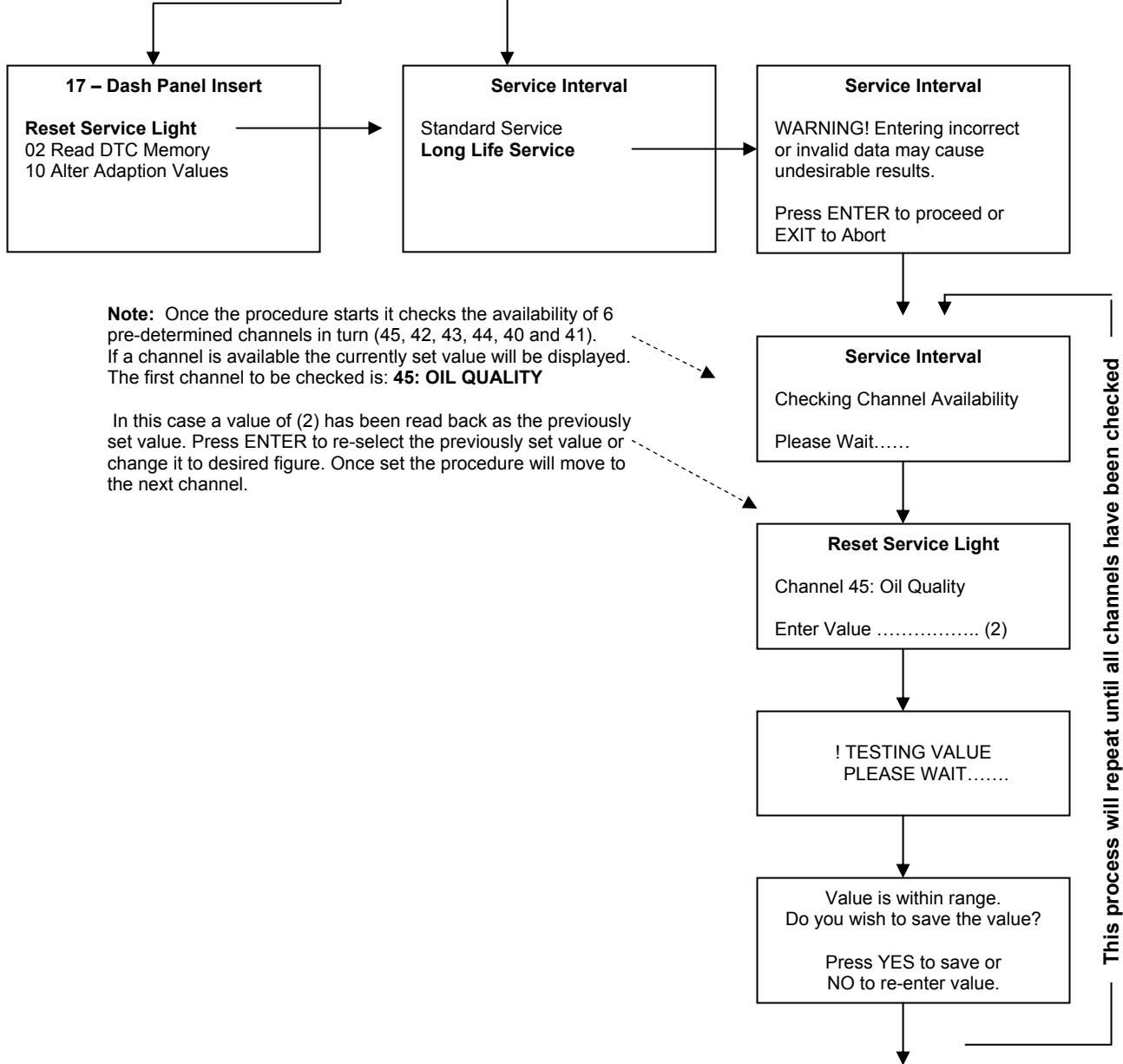
Reset Service Light

Service Light Reset Success

Depress the service button on the dashboard to check the result.

Press Any Key to Continue.

This process will repeat until all channels have been checked



Channel Number	Channel description	Unit	Min	Max	Information:	Suggested values - Petrol	Suggested values - Diesel
45	Oil Quality	Units	1	5	Refer to specific technical information for value. Standard Oil = 1 Long life Oil = 2	1	2
42	Min. Value km	km	0	93	Note: Min and Max values are optimums and may never be reached. The value set here is the lowest mileage which needs to be covered before the instruments will display the SERVICE NOW warning. Value 93 indicates 9300km or approx. 5750miles.	93	93
43	Max. Value km	km	93	300	Note: Min and Max values are optimums and may never be reached. The value set here is the highest mileage which can be covered before the instruments will display the SERVICE NOW warning. Value 186 indicates 18600km or approx. 11500miles.	n/a	295
44	Max. Time Interval	Days	0	744	Note: Min and Max values are optimums and may never be reached. The value set here is the longest time period (in days) before the instruments will display the SERVICE NOW warning. Value 730 indicates 730 days (2 years)	n/a	730
40	Act. Value Insp 1	km	0	789	This is the actual number of kilometres covered since the last service reset. A value of 0 (zero) indicates zero miles.	1	5
41	Act. Value Insp 1	Days	0	2047	This is the actual number of days passed since the last service reset. A value of 0 (zero) indicates zero days, 20 equals 20 days.	1	5